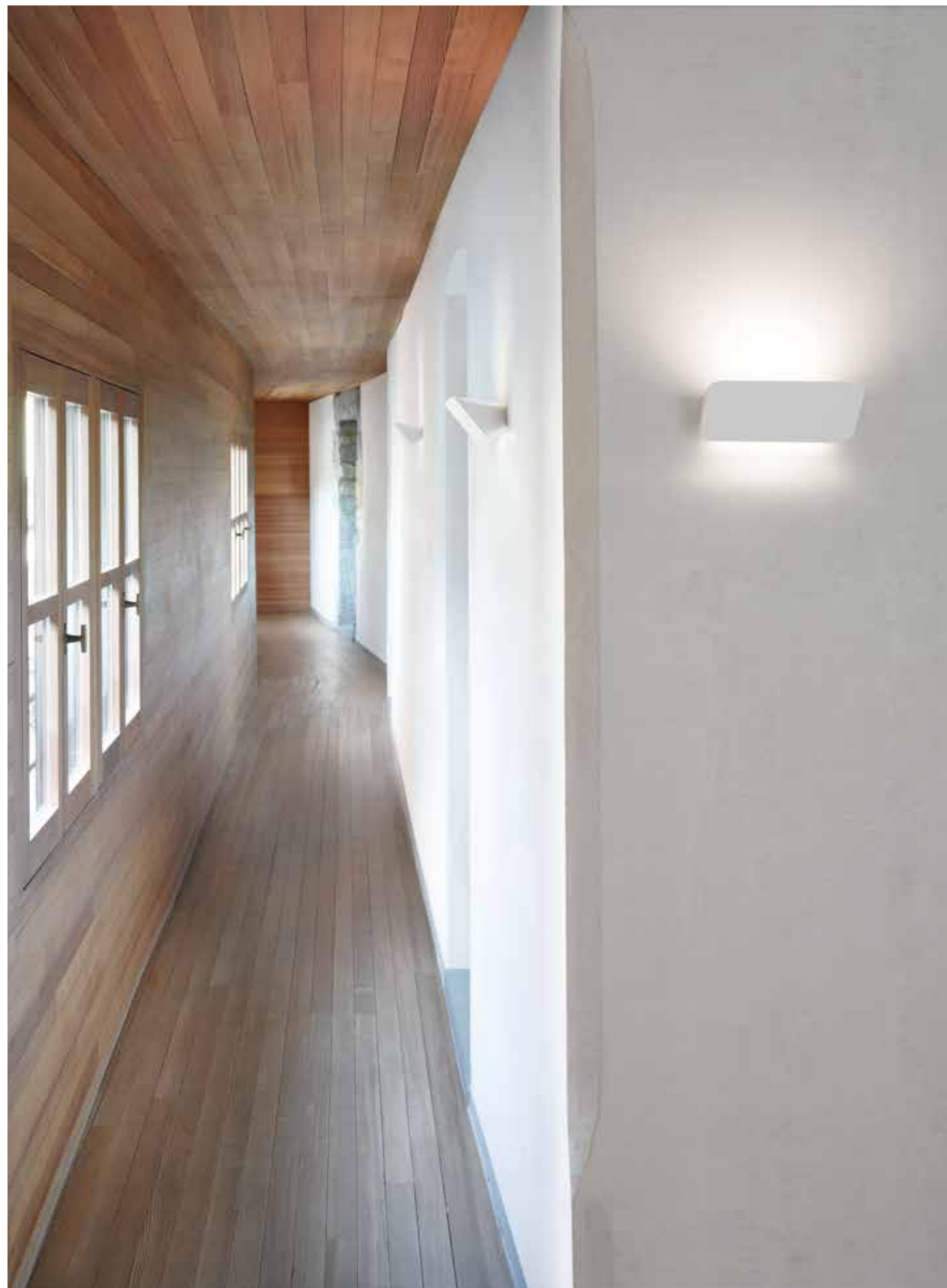


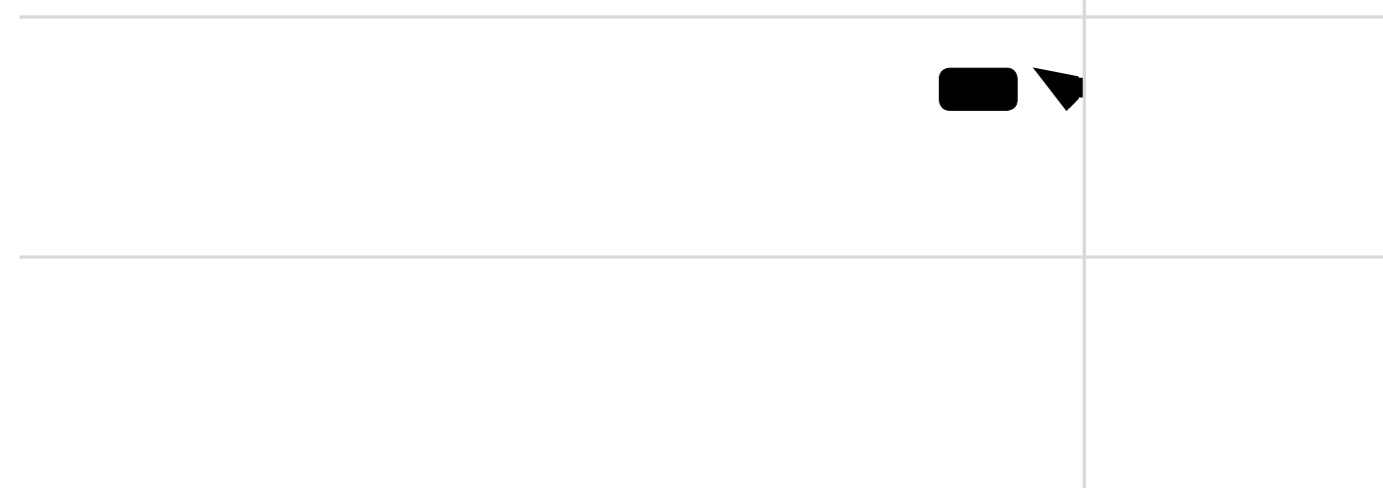
Alfredo Häberli

Lane



Lane

WALL



Alfredo Häberli, 2007

EN Lane is an aluminium strip that encloses and at the same time releases pleasant indirect light, upward and downward on the wall. Sleek and essential, the lamp comes in different lengths, depending on the light source.

IT Estremamente pulita ed essenziale, Lane è una striscia in alluminio che racchiude e, al tempo stesso, rilascia una gradevole luce indiretta verso l'alto e il basso della parete.

DE Äußerst sauber und reduziert Lane ist ein Aluminiumstreifen, der umschließt und gleichzeitig mit einem angenehmen indirekten Licht nach oben und unten die Wand bestreicht.

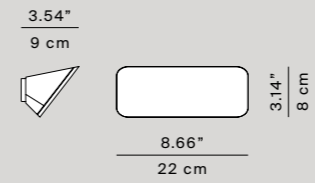
FR Extrêmement discrète et essentielle, Lane est une bande en aluminium où est intégrée la source lumineuse qui diffuse une lumière agréable indirecte vers le haut et vers le bas du mur.

ES Extremadamente limpia y esencial, Lane es una banda de aluminio que encierra, y al mismo tiempo, extiende una agradable luz indirecta en la pared en los dos sentidos.

D64

Lane

D64
dimmable with
wall control
weight 0,75 Kg




EEL

Light source **D64** LED dimmable R7s (Ø max: 22 mm) A++ / A+ / A

120W HDG R7s (Ø max: 22 mm) C

Materials Extruded and die-cast aluminium

Structure finishes  Painted white

Insulation class   **CE**

TECHNICAL DATA

MOD. Lane

LUCEPLAN 2019/20



MOD. Lane

LUCEPLAN 2019/20