
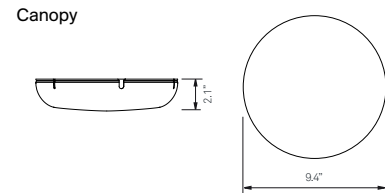
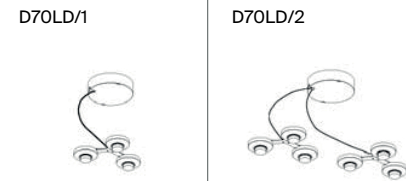
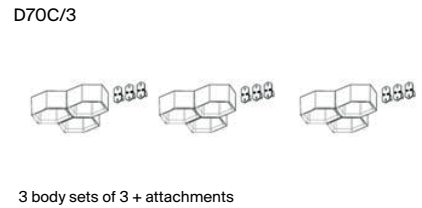
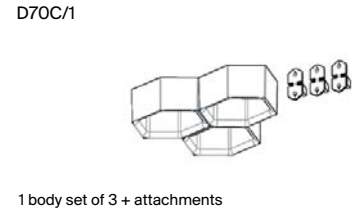
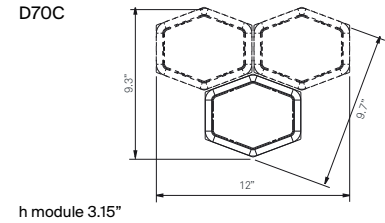


HONEYCOMB

design Habits Studio, 2011

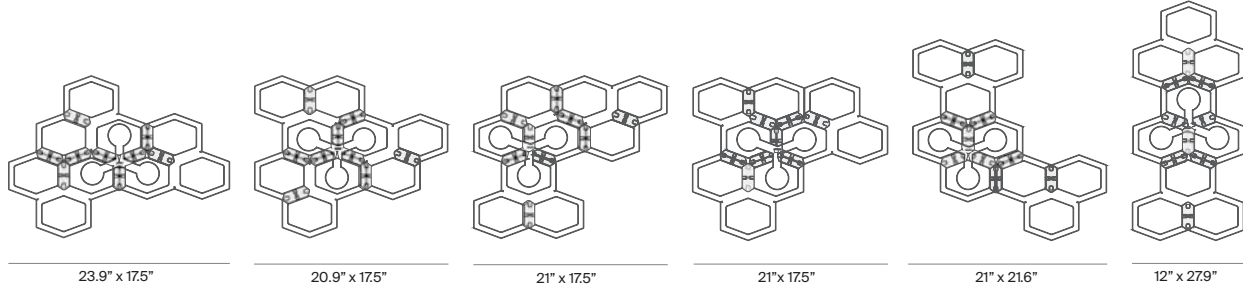
**LUCE
PLAN**

Type:	Suspension
Lamps:	D70LD/1 - 3 x LED 7W 3000K - CRI 80 D70LD/2 - 6 x LED 7W 3000K - CRI 80 Dimmable 0-10V - 120/277V~
Product use:	Indoor
Materials:	Polycarbonate
Colors:	Glossy white, canopy white
Description:	Like the cells of a beehive, the hexagonal modules of Honeycomb are joined freely into a suspension lamp with a captivating organic symmetry. The hexagons, connected by clips, give life to a self-supporting structure capable of housing energy-saving LED and halogen light sources.
Certifications:	
Reference code:	<p>Structure</p> <p>D70K/6 1D701K600502 complete version 6 bodies + 2 LED modules + suspension kit</p> <p>D70C 1D7001000002 glossy white</p> <p>D70C/3 1D7003000002 glossy white</p> <p>Optics</p> <p>D70LD/1 1D701L1D0500 satined aluminium</p> <p>D70LD/2 1D701L2D0500 satined aluminium</p> <p>Accessories</p> <p>D70S 1D7002000002 white suspension kit 4 steel cables</p> <p>D70A1 D7005000002 kit 5 white hooks</p>



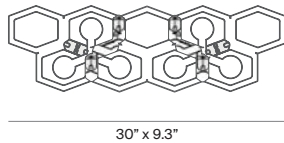
SUGGESTED CONFIGURATIONS

HOW TO MAKE A COMPOSITION WITH 3 BODIES AND 1 LIGHT MODULE



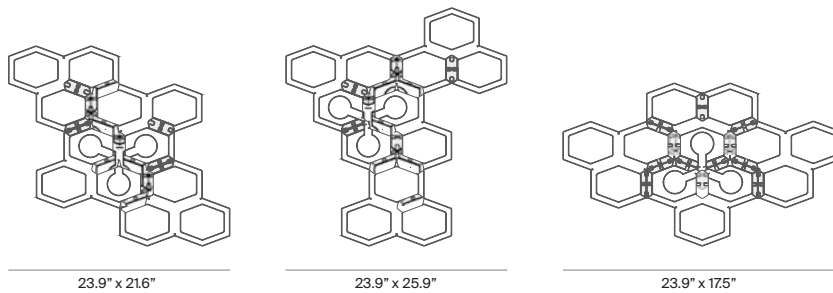
Q.ty	description	model	item code
3	3 bodies + 9 attachments	D70C	1 D7001000002
1	suspension kit	D70S	1 D7002000002
	+		
1	optic, LED version	D70LD/1	1D701L1D0500

HOW TO MAKE A COMPOSITION WITH 3 BODIES AND 2 LIGHT MODULES



Q.ty	description	model	item code
3	3 bodies + 9 attachments	D70C	1 D7001000002
1	suspension kit	D70S	1 D7002000002
	+		
1	2 optics, LED version	D70LD/2	1D701L2D0500

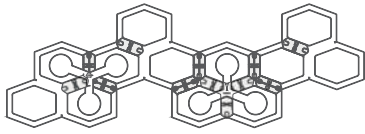
HOW TO MAKE A COMPOSITION WITH 4 BODIES AND 1 LIGHT MODULE



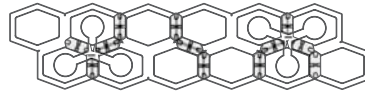
Q.ty	description	model	item code
4	4 bodies + 12 attachments	D70C	1 D7001000002
1	suspension kit	D70S	1 D7002000002
	+		
1	optic, LED version	D70LD /1	1D701L1D0500

SUGGESTED CONFIGURATIONS

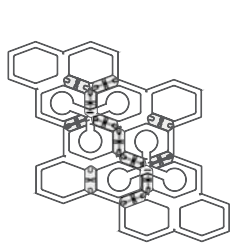
HOW TO MAKE A COMPOSITION WITH 4 BODIES AND 2 LIGHT MODULES



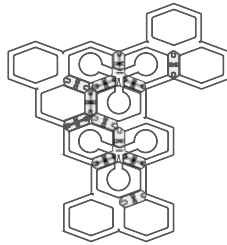
38.8" x 12.3"



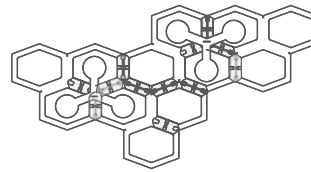
38.8" x 9.25"



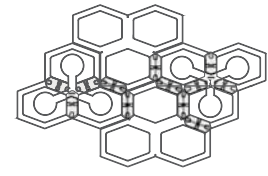
23.9" x 21.6"



25.7" x 23.9"



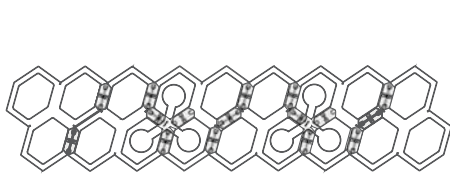
33.4" x 17.5"



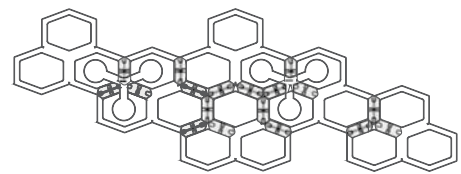
26.8" x 21.6"

Q.ty	description	model	item code
4	4 bodies + 12 attachments	D70C	1 D7001000002
1	suspension kit	D70S	1 D7002000002
	+		
1	2 optics, LED version	D70LD/2	1D701L2D0500

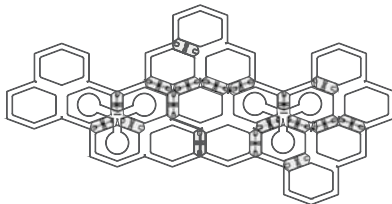
HOW TO MAKE A COMPOSITION WITH 6 BODIES AND 2 LIGHT MODULES



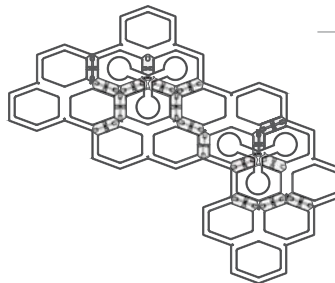
48" x 11.3"



47.8" x 17.6"



47.8" x 20.9"



35.9" x 32.5"

Q.ty	description	model	item code
6	6 Kit (6 bodies + 2 mod. LED + suspension kit)	D70K/6	1D701K600502